

The Most Trustworthy Ultrasound Partner in Your Pocket



Lighter - Faster - Smarter !





Scanning with Continuous Power in Hand

- 2 hours of battery life with Quick-Charge support
- Quick-Charge support



Seamless Connectivity and DICOM Integration

- Fast connection across Android, iOS, and Windows platforms
- App-based ultrasound with no additional subscription
- DICOM 3.0 system support, ensuring smooth integration with PACS/HIS*



Tailored Imaging Experience

- Customize 30+ imaging parameters to suit your preferences
- Access 15+ presets for quick and easy start, or create your own custom presets



Elevate Mobility with Lightweight Powerhouse and Waterproof Design

- Feather-light design and IP67 Waterproof for enhanced durability

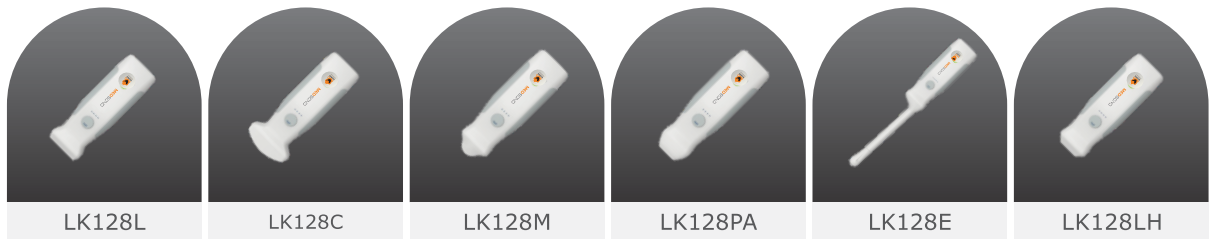


Intelligent Clinic Support with AI Functionality

- Auto-measure tools for obstetrics and cardiology
- AI-powered automatic gain/setting/measurement
- Auto Urine Bladder Volume Measurement for fast screening
- Auto EF calculation for comprehensive cardiac assessment
- Auto IMT measurement for vascular health



Stay tuned for more innovative features in our continuous updates!



Frequency Bandwidth	4.2 - 12.5 MHz	2.0 - 5.0 MHz	3.6 - 8.5 MHz	1.3 - 3.7 MHz	3.6 - 8.5 MHz	4.0 - 17.0 MHz
Max Depth	12.6 cm	30 cm	12.6 cm	30 cm	15 cm	12.6 cm
Field of View	-	60°	100°	90°	151°	-

Clinical Applications

Can be customized in app					
• Breast	• Abdomen	• Abdomen	• Abdomen	• OB Early	• Aesthetic
• Carotid	• Abdomen Difficult	• Abdomen Difficult	• Cardiac	• Pelvis	• Breast
• MSK	• Bladder Meas.	• Neo Head	• FAST	• Prostate	• Carotid
• Nerves	• FAST	• Pediatric Cardiac	• Lung	• Urology	• MSK
• Ocular	• GYN		• OB Mid Late		• Nerves
• Peripheral Vessels	• OB Early				• Ocular
• Superficial	• OB Mid Late				• Peripheral Vessels
• Superficial Mirror	• Renal				• Superficial
• Thyroid	• Spleen				• Superficial Mirror
					• Thyroid

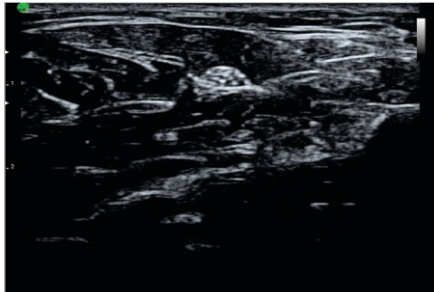
Wi-Fi	802.11 a/b/g/n (2.4GHz, 5GHz)				
Modes	B-Mode, M-Mode, Color Doppler*, PW*, Power Doppler*				
DICOM	DICOM 3.0*				
Battery Working Time	Up to 2 hours				
Operating System	     				

(*optional)

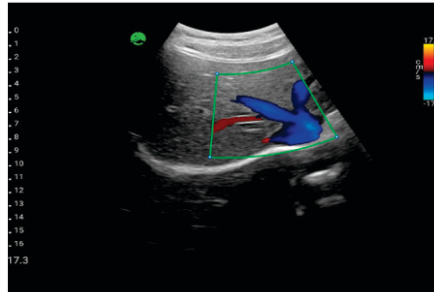
- This product, features, options, and transducers are not commercially available in all countries.
- Sales and Shipments are effective only after the approval by the regulatory affairs. Please contact your local sales representative for further details.

Full scanning mode for diverse diagnostic condition

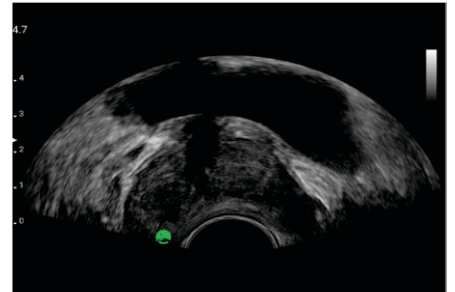
LeSONO supports B mode, M mode, Color Doppler, Power Doppler and Pulsed Wave mode.



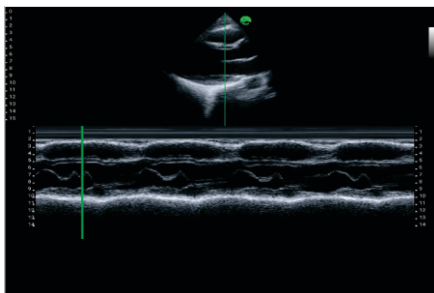
Median Nerve, B mode



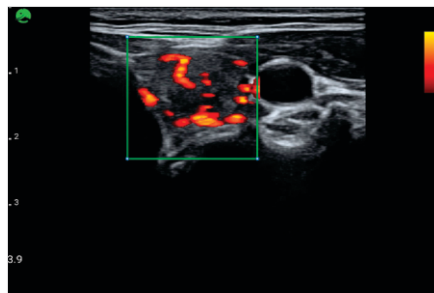
Hepatic Vein, Color doppler



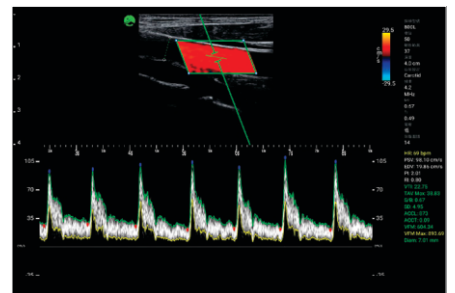
Prostate, B mode



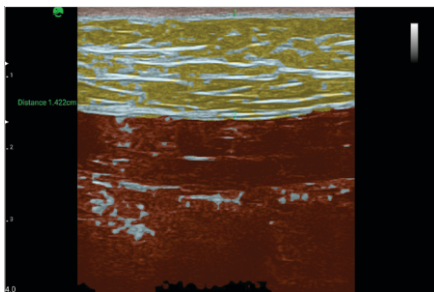
Heart, M mode



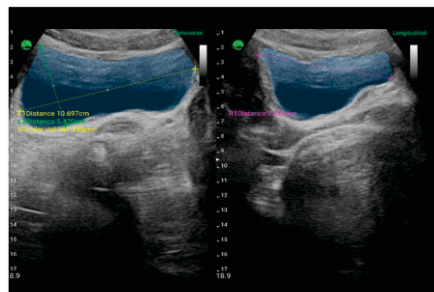
Thyroid, Power doppler



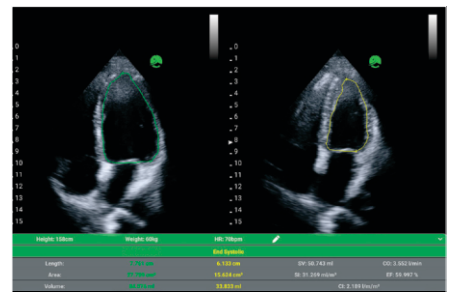
Carotid, Pulsed wave



AI Fat, B mode



AI Bladder, B mode



AI EF, B mode